

A man and a woman are standing outdoors, likely on a beach, wearing matching navy blue outfits. The woman is in the foreground, wearing a navy blue button-down dress with a pocket and hoop earrings. The man is standing behind her, wearing a navy blue blazer over a white collared shirt. The background shows a blurred beach scene with the ocean and some rocks.

Let's
Get Back
To It!

When your brand's image sets the tone for your clientele's experience, look no further than the Biz Corporates range of modern apparel.

Designed locally to suit all seasons, body shapes and branding guidelines, you're sure to find something to suit your needs and support you to build credibility with your clientele.

Perfect for



**GENERAL
ADMIN**



SALES TEAM



**FINANCE &
BANKING**



MANAGEMENT

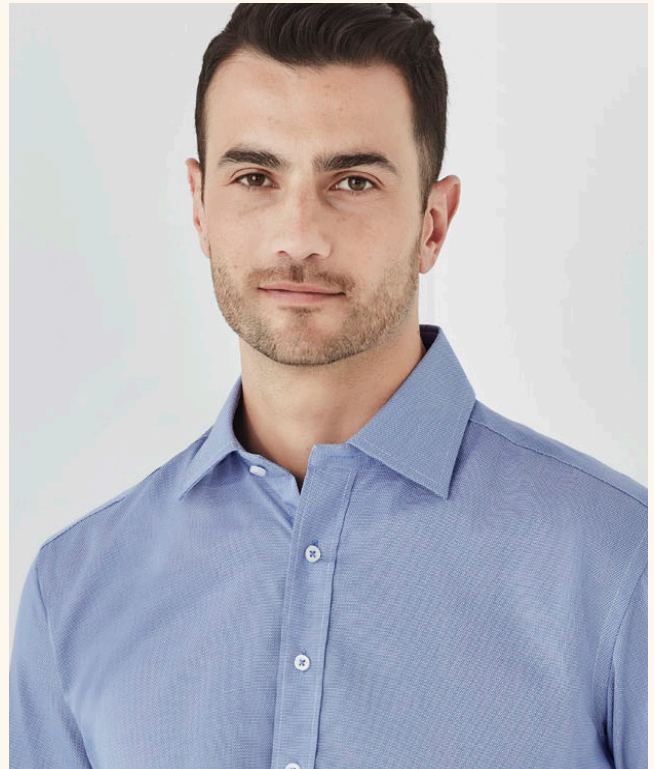
When your brand image matters,
Biz Corporates has you covered.

WWW.BIZCORPORATES.COM

Explore our range of versatile shirting for every working wardrobe.



HUDSON WOMEN
Built for work, designed for comfort



HUDSON MEN
Soft and breathable 100% Cotton



ESTELLE
Easy-care, wrinkle free blouses



ARIA
Available in 7 different colours

Unite your team across all roles with
our range of mix and match separates.

CARDIGANS

BLAZERS

DRESSES

